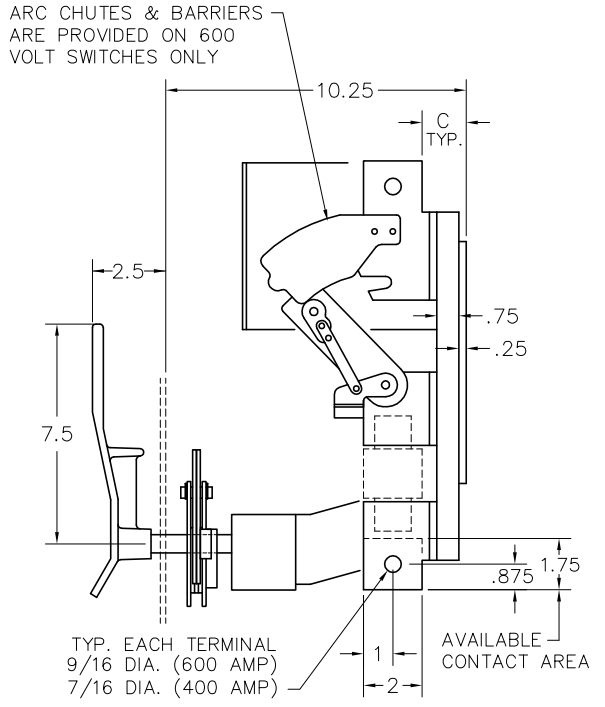
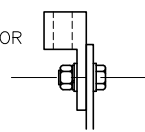


FRONT VIEW



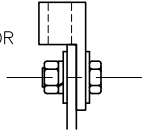
SIDE VIEW

RECOMMENDED LUG:  
INTERNATIONAL CONNECTOR  
#RU-250



400 AMP

RECOMMENDED LUG:  
INTERNATIONAL CONNECTOR  
#RU-350

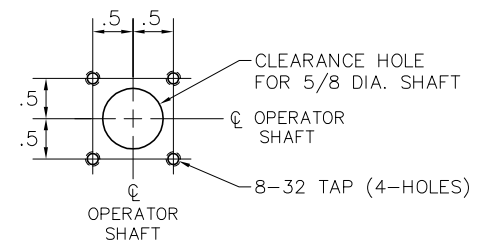


600 AMP

RECOMMENDED BOLT:  
3/8-16 x 1" LONG

RECOMMENDED BOLT:  
1/2-13 x 1-1/4" LONG

LUG MOUNTING



DRILLING LAYOUT

VOLTAGE (AC)	AMPS	CAT. NO.	A	B	C
240 (USE 300 V. FUSES)	400	T425-5	13.625	.187	1.406
	600	T426-6	13.687	.250	1.500
600 (USE 600 V. FUSES)	400	T465-5	14.500	.187	1.406
	600	T466-6	14.625	.250	1.500

400 & 600 A, 4-POLE, SERIES T SWITCHES WITH GENEVA DUAL OPERATOR

SCALE:	APPROVED BY:	DRAWN BY JAE
DATE: 7-7-78		REVISED 3

**boltswitch, inc.**  
CRYSTAL LAKE, ILLINOIS 60014

DRAWING NUMBER  
O-1217

REV. 3 6-9-05 KJE WAS INCORRECTLY SHOWN WITH SINGLE CROSSBAR; 13.625 WAS 13.687; 13.687 WAS 13.750; 14.500 WAS 14.562  
REV. 2 2-16-94 JAE CORRECTION 15.937 WAS 11.937  
REV. 1 2-10-94 JAE DWG REDRAWN