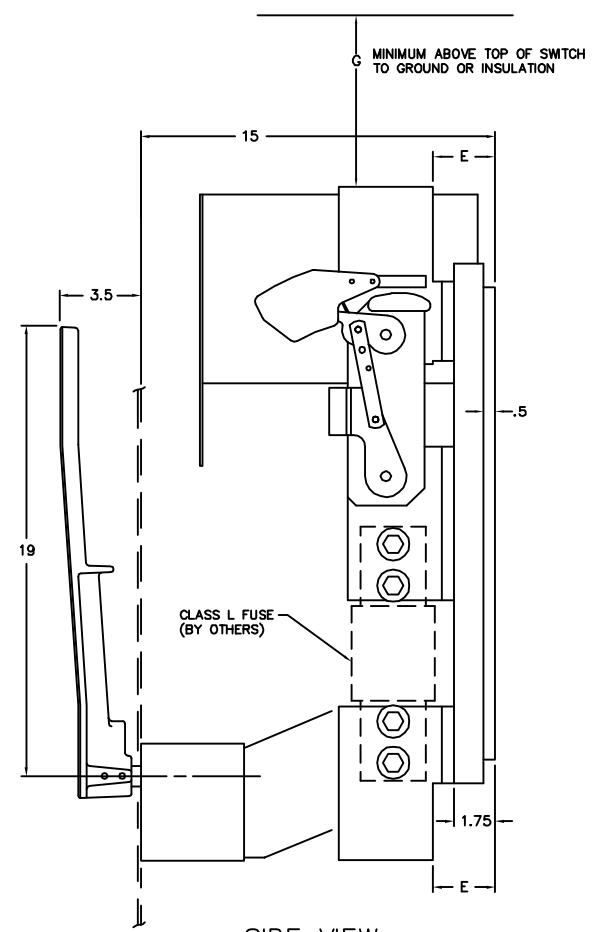
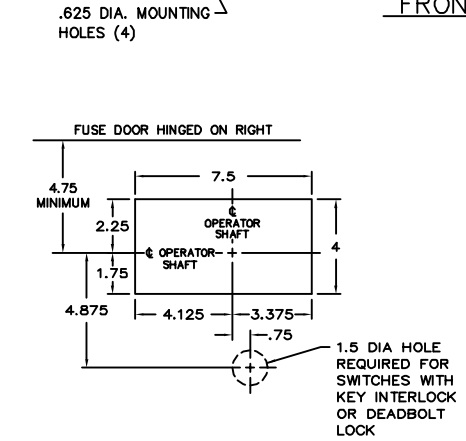
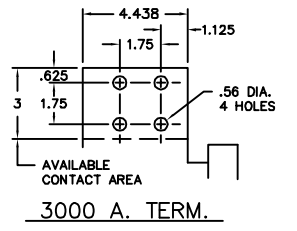
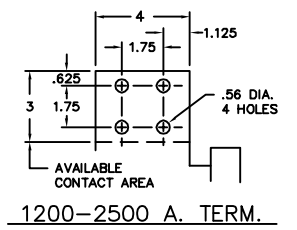
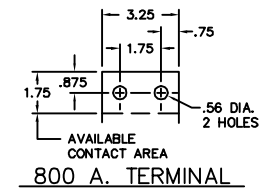


FRONT VIEW



SIDE VIEW

VENTILATION
 WHEN THE SWITCH IS TOTALLY ENCLOSED, VENTILATING LOUVERS MUST BE PROVIDED YIELDING A MINIMUM OPEN AREA OF "H" SQUARE INCHES NEAR THE TOP OF THE ENCLOSURE, AND "H" SQUARE INCHES NEAR THE BOTTOM OF THE ENCLOSURE.



RECOMMENDED FRONT CUT-OUT

OPERATOR DETAILS

FOR OPERATOR DETAILS AND ALTERNATE FRONT CUT-OUTS, REFER TO THE FOLLOWING DRAWINGS:
 O-1023A MANUAL OPERATOR
 O-1090A SHUNT TRIP OPERATOR

KEY INTERLOCK

KEY INTERLOCK SPECIFICATIONS FOR SWITCHES EQUIPPED WITH KEY INTERLOCK PROVISIONS ARE:
 .375 BOLT PROJECTION WHEN WITHDRAWN
 - KIRK TYPE B
 - SUPERIOR TYPE B6003

AMP	CATALOG NUMBER	NET WT. (3-P, 3-W)	A	B	C	D	E	G		H
								GND.	INS.	
800	VL467	171 LBS	25.75	2	1.75	.375	2.5	8	4	NONE
1200	VL468	180 LBS	28.5	3.25	3.25	.375	2.5	10	6	NONE
1600	VL469	182 LBS	28.5	3.25	3.25	.375	2.5	12	6	60 SQ. IN.
2000	VL4610	205 LBS	28.5	3.25	3.25	.5	2.625	14	6	60 SQ. IN.
2500	VL4611	225 LBS	28.5	3.25	3.25	.625	2.625	16	6	80 SQ. IN.
3000	VL4612	242 LBS	28.5	3.25	3.25	.75	2.625	16	8	120 SQ. IN.

NOTE: FOR SWITCHES EQUIPPED WITH OPTIONAL SHUNT TRIP, ADD SUFFIX -ST TO CATALOG NUMBER

SERIES VL SWITCHES, 800-3000 AMP
 4 POLE 600VAC

SCALE:	APPROVED BY:	DRAWN BY JAE
DATE: 6-25-76		REVISED 3

boltswitch, inc.
 CRYSTAL LAKE, ILLINOIS 60014

DRAWING NUMBER
 O-1139