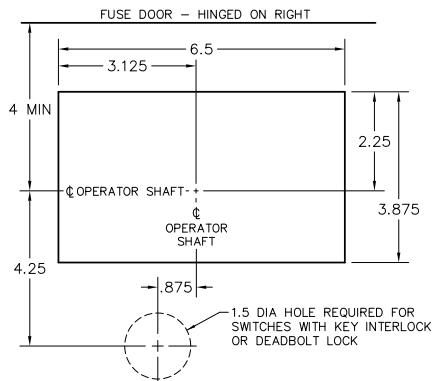


800 & 1200 AMP

VOLTS	AMPS	CAT. NO. 3 POLE	CAT. NO.* 2 POLE	NET WT. 3 POLE	B
240 (USE 300 V. FUSES)	800	T327WOL	T227WOL	58 LBS.	.312
	1200	T328WOL	T228WOL	61 LBS.	.375
600 (USE 600 V. FUSES)	800	T367WOL	T267WOL	62 LBS.	.312
	1200	T368WOL	T268WOL	65 LBS.	.375

* 2 POLE SAME AS 3 POLE EXCEPT OMIT CENTER POLE



800 & 1200 AMP FRONT CUT-OUT

SHUNT TRIP OPERATOR

SHUNT TRIP OPERATOR IS AVAILABLE FOR 800 & 1200 AMP SWITCHES ONLY. ADD SUFFIX -ST TO CATALOG NUMBER.

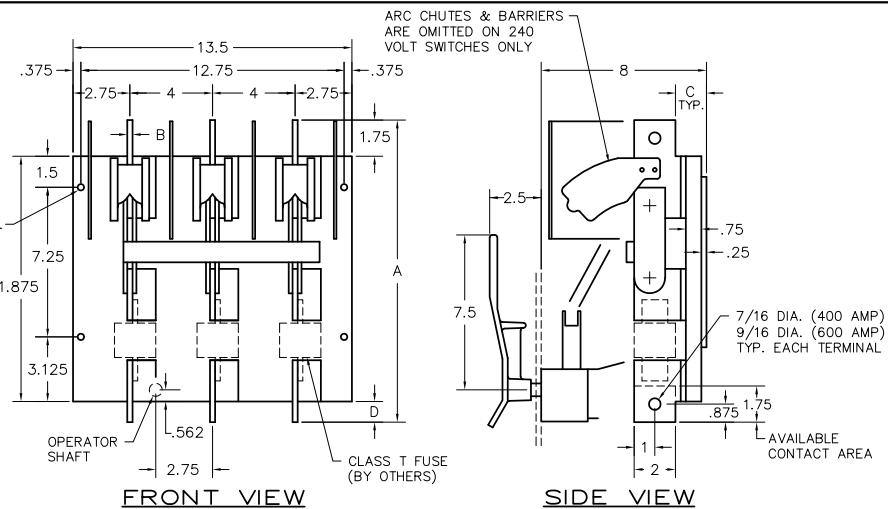
E.U.S.E.R.C. PADLOCK CLIP

THE RECTANGULAR CUT-OUTS ARE REQUIRED WHEN USING OPTIONAL E.U.S.E.R.C. PADLOCK CLIPS

KEY INTERLOCK SPECIFICATIONS

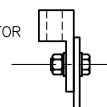
KEY INTERLOCK SPECIFICATIONS FOR SWITCHES EQUIPPED WITH KEY INTERLOCK PROVISIONS ARE:

- .375 BOLT PROJECTION WHEN WITHDRAWN
- KIRK TYPE B
- SUPERIOR TYPE B6003

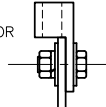


400 & 600 AMP

RECOMMENDED LUG:
INTERNATIONAL CONNECTOR
#RU-250



RECOMMENDED LUG:
INTERNATIONAL CONNECTOR
#RU-350



RECOMMENDED BOLT:
3/8-16 x 1" LONG

400 AMP

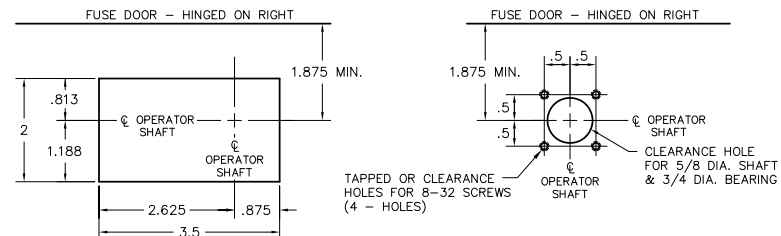
RECOMMENDED BOLT:
1/2-13 x 1-1/4" LONG

600 AMP

LUG MOUNTING

VOLTS	AMPS	CAT. NO. 3 POLE	CAT. NO.* 2 POLE	NET WT. 3 POLE	A	B	C	D
240 (USE 300 V. FUSES)	400	T325WOL	T225WOL	23 LBS.	13.625	.187	1.406	.062
	600	T326WOL	T226WOL	25 LBS.	13.687	.250	1.500	.125
600 (USE 600 V. FUSES)	400	T365WOL	T265WOL	27 LBS.	14.500	.187	1.406	.937
	600	T366WOL	T266WOL	29 LBS.	14.625	.250	1.500	1.000

* 2 POLE SAME AS 3 POLE EXCEPT OMIT CENTER POLE



400 & 600 AMP FRONT CUT-OUTS

FOR SWITCHES EQUIPPED WITH KEY INTERLOCK, REFER TO DRAWING NO. 0-1023

400-1200 AMP 2 & 3 POLE CLASS T FUSIBLE SWITCHES

SCALE:	APPROVED BY:	DRAWN BY JWE
DATE: 8-11-88		REVISED 6

boltswitch, inc.
CRYSTAL LAKE, ILLINOIS 60014

DRAWING NUMBER
0-1128

REV. 6 3-17-21 ETM REMOVED 480/277 VOLT VERSIONS
REV. 5 2-23-06 JWE UPDATED TO SHOW CURRENT HANDLE ON 800 & 1200 AMP
REV. 4 6-13-05 KJE 13.625 WAS 13.687; 13.687 WA 13.750; 14.500 WAS 14.562
REV. 3 6-1-00 JAE KEY INTERLOCK REVISED DUE TO NEW ST-B
REV. 2 7-8-97 RME NEW FRONT CUT-OUT
REV. 1 6-5-92 JAE T368WOL REINSTATED