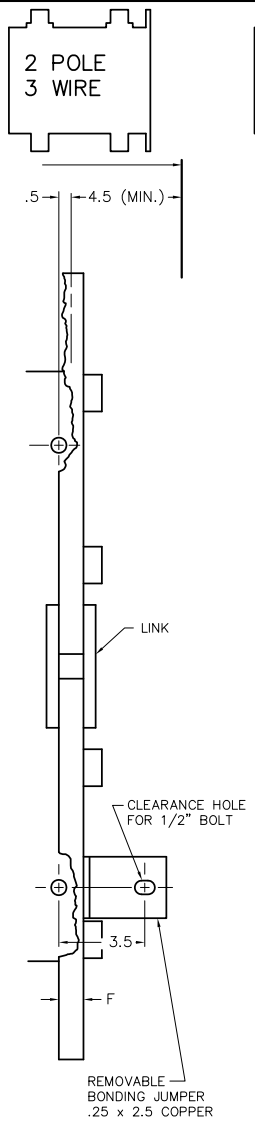
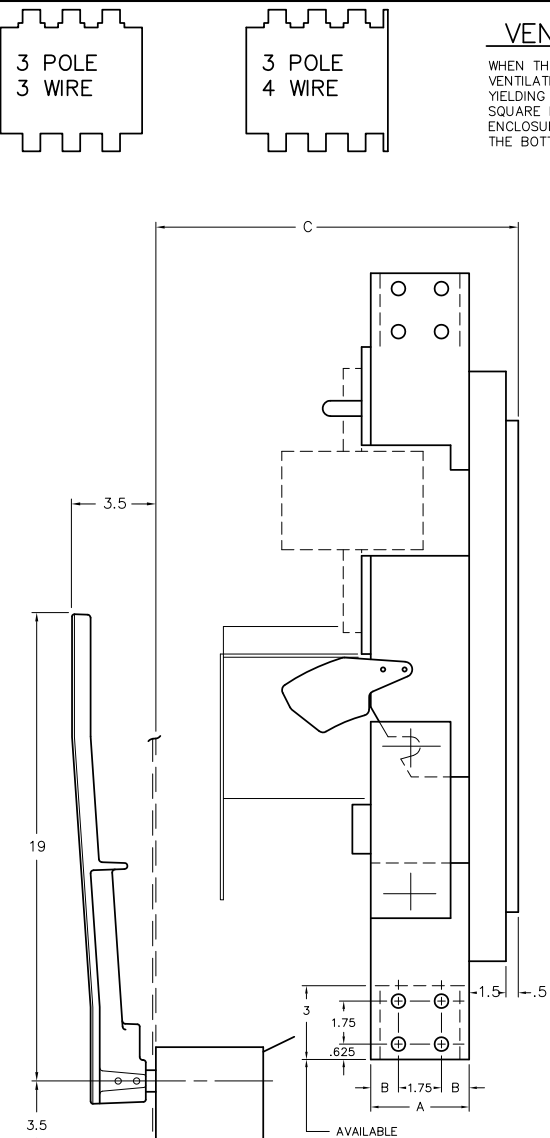


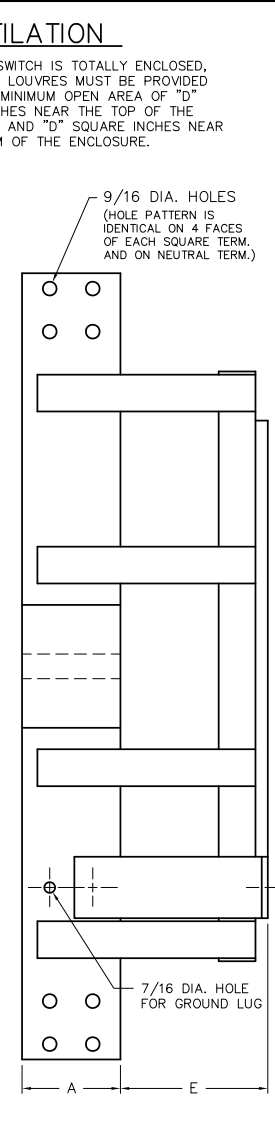
**FRONT VIEW**



**NEUTRAL**



**SECTION A-A**



**SIDE VIEW**  
(ILLUSTRATES NEUTRAL ONLY)

**VENTILATION**

WHEN THE SWITCH IS TOTALLY ENCLOSED, VENTILATING LOUVRES MUST BE PROVIDED YIELDING A MINIMUM OPEN AREA OF "D" SQUARE INCHES NEAR THE TOP OF THE ENCLOSURE, AND "D" SQUARE INCHES NEAR THE BOTTOM OF THE ENCLOSURE.

2 POLE  
2 WIRE

2 POLE  
3 WIRE

3 POLE  
3 WIRE

3 POLE  
4 WIRE

5/8 DIA. MOUNTING HOLES (4)

OPERATOR SHAFT

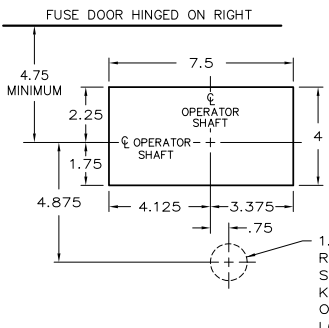
OMIT THIS POLE ON 2-POLE SWITCH

REMOVABLE BONDING JUMPER .25 x 2.5 COPPER

AVAILABLE CONTACT AREA

7/16 DIA. HOLE FOR GROUND LUG

9/16 DIA. HOLES (HOLE PATTERN IS IDENTICAL ON 4 FACES OF EACH SQUARE TERM. AND ON NEUTRAL TERM.)



**RECOMMENDED FRONT CUT-OUT**

**OPERATOR DETAILS**

FOR OPERATOR DETAILS AND ALTERNATE FRONT CUT-OUTS, REFER TO THE FOLLOWING DRAWINGS:  
 O-1023A MANUAL OPERATOR  
 O-1090A SHUNT TRIP OPERATOR

**KEY INTERLOCK**

KEY INTERLOCK SPECIFICATIONS FOR SWITCHES EQUIPPED WITH KEY INTERLOCK PROVISIONS ARE:  
 .375 BOLT PROJECTION WHEN WITHDRAWN  
 - KIRK TYPE B  
 - SUPERIOR TYPE B6003

AMP	CATALOG NUMBER				NET WT. (3-P, 3-W)	A	B	C	D	E	F
	2-P, 2-W	2-P, 3-W	3-P, 3-W	3-P, 4-W							
4000	SLB2413	SLB3413-N	SLB3413	SLB4413-N	300 LBS	4	1.125	14.75	80 SQ. IN.	6	1
5000	SLB2414		SLB3414		350 LBS	5	1.625	15.25	120 SQ. IN.		
6000	SLB2415		SLB3415		405 LBS	5	1.625	15.25	150 SQ. IN.		

NOTE: FOR SWITCHES EQUIPPED WITH OPTIONAL SHUNT TRIP, ADD SUFFIX -ST TO CATALOG NUMBER

**SERIES SLB SWITCHES (BOTTOM-FEED)**  
**4000-6000A, 2P/2W, 2P/3W, 3P/3W, 3P/4W, 480VAC**

SCALE:	APPROVED BY:	DRAWN BY WCE
DATE: 10-14-91		REVISED 3

**boltswitch, inc.**  
CRYSTAL LAKE, ILLINOIS 60014

DRAWING NUMBER  
O-1116

REV. 3 1-17-12 ETM, 5000 AND 6000 VALUES ADDED, ABC&D  
 REV. 2 11-7-95 JAE, FRONT CUT-OUT REVISED, HANDLE REVISED  
 REV. 1 1-5-93 WCE, DIM. ADDED & CHANGED FOR OPER SHAFT