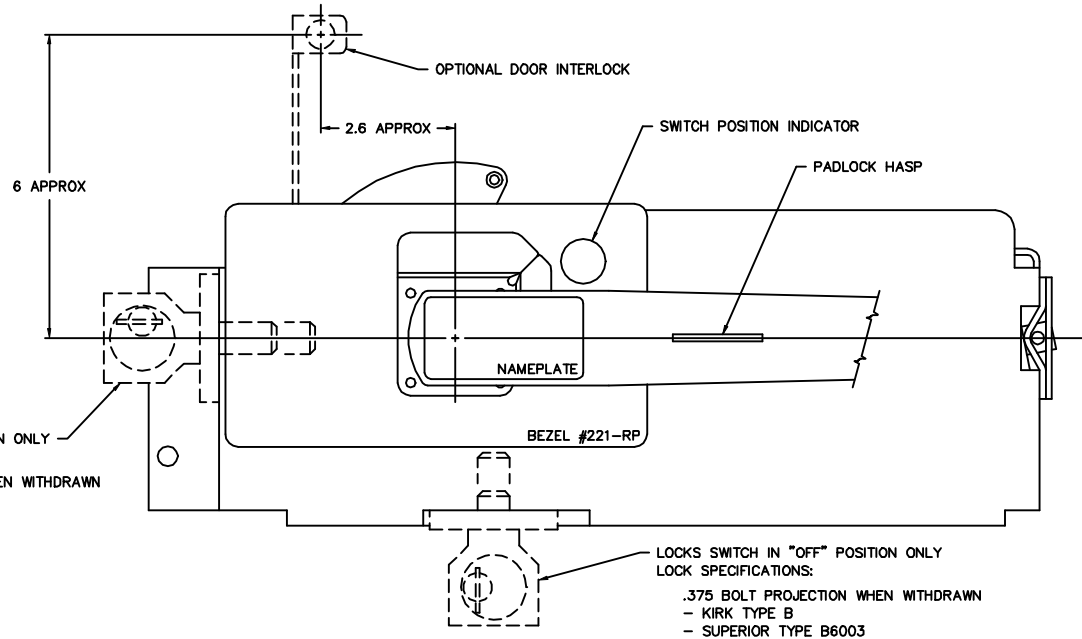


LOCKS SWITCH IN "ON" POSITION ONLY  
 LOCK SPECIFICATIONS:  
 1.125 BOLT PROJECTION WHEN WITHDRAWN  
 - KIRK TYPE B  
 - SUPERIOR TYPE B6003



LOCKS SWITCH IN "OFF" POSITION ONLY  
 LOCK SPECIFICATIONS:  
 .375 BOLT PROJECTION WHEN WITHDRAWN  
 - KIRK TYPE B  
 - SUPERIOR TYPE B6003

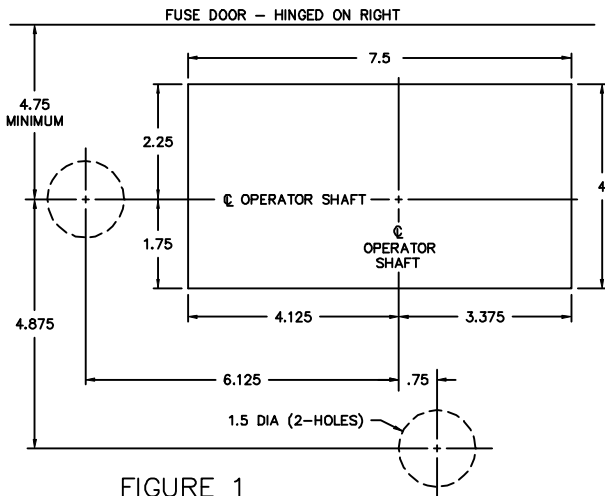


FIGURE 1  
 RECOMMENDED FRONT CUT-OUT

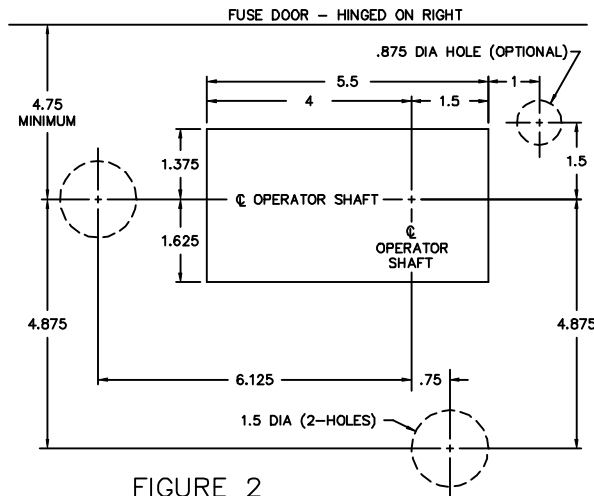


FIGURE 2  
 ALTERNATE FRONT CUT-OUT

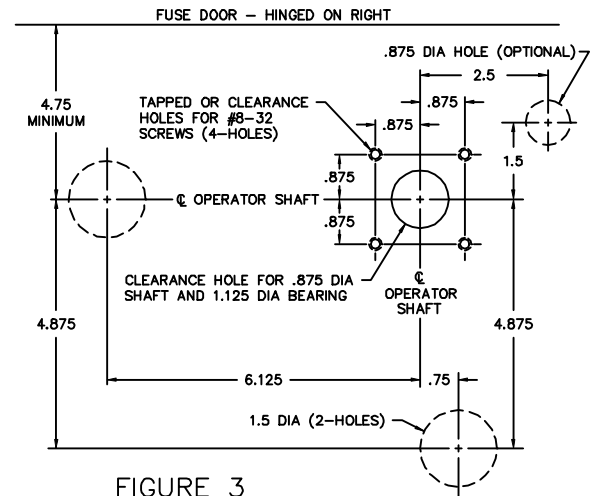


FIGURE 3  
 ALTERNATE FRONT CUT-OUT

NOTE: WHEN USING THE ALTERNATE POSITION INDICATOR HOLE IN FIGURE 2, USE POSITION INDICATOR LABEL #221-KP AFFIXED TO THE ENCLOSURE FRONT. WHEN USING THE POSITION INDICATOR HOLE IN FIGURE 3, USE EITHER BEZEL #221-RP OR LABEL #221-KP AFFIXED TO THE ENCLOSURE FRONT.

MANUAL OPERATOR (VL, SL, VLB & SLB) WITH TWO KEY INTERLOCKS		
SCALE:	APPROVED BY:	DRAWN BY JAE
DATE: 4-4-94		REVISED 1
<b>boltswitch, inc.</b> CRYSTAL LAKE, ILLINOIS 60014		DRAWING NUMBER 0-1023B