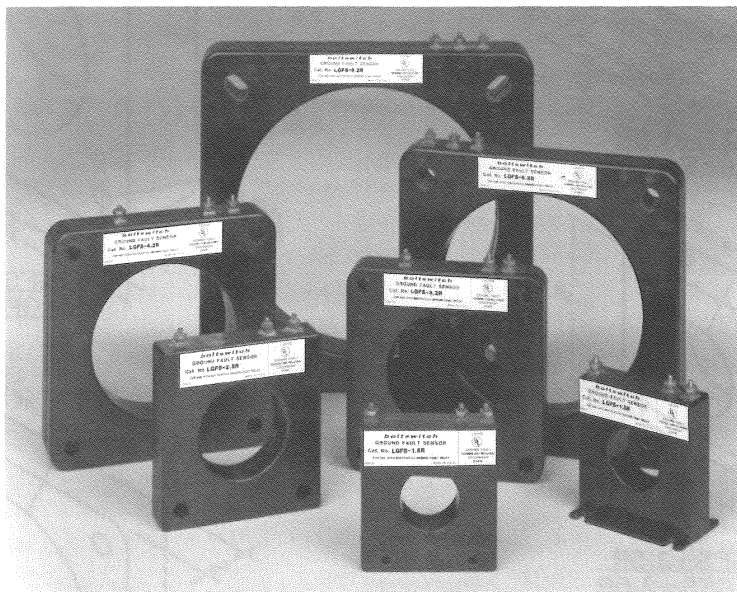


boltswitch[®]



ROUND GROUND FAULT SENSORS



CATALOG NUMBERS

DIAMETER OF OPENING	PICK-UP AMPS	
	100-1200	5-60
1-1/2"	GFS-1.5R	LGFS-1.5R
2-1/2"	GFS-2.5R	LGFS-2.5R
3-1/4"	GFS-3.2R	LGFS-3.2R
4-1/4"	GFS-4.2R	LGFS-4.2R
5-3/4"	GFS-5.7R	LGFS-5.7R
6-5/16"	GFS-6.3R	LGFS-6.3R
8-1/4"	GFS-8.2R	LGFS-8.2R

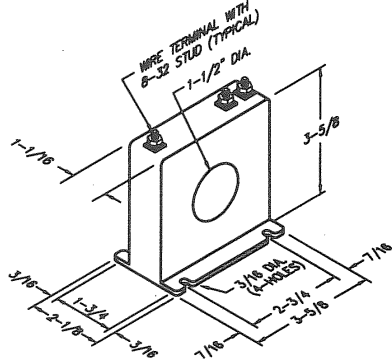
APPLICATION: These sensors are used to signal the Boltswitch Ground Fault Relay. GFR Relay must be used with GFS Sensor. LGFR Relay must be used with LGFS Sensor.

TESTS: Tested in accordance with UL1053, and listed as Ground Fault Sensing and Relaying Equipment under File number E88770.

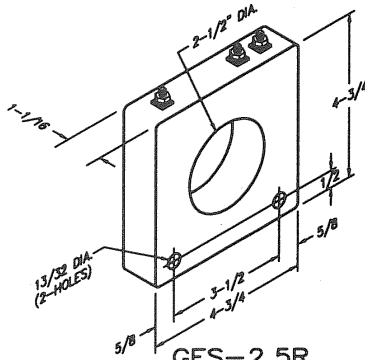
FEATURES: Very sturdy construction, attractive.

boltswitch, inc.[®] 6208 COMMERCIAL ROAD CRYSTAL LAKE, ILLINOIS 60014
www.boltswitch.com

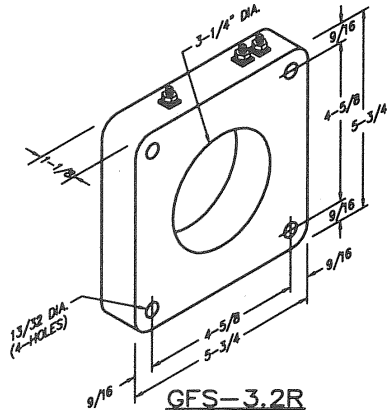
ROUND GROUND FAULT SENSORS



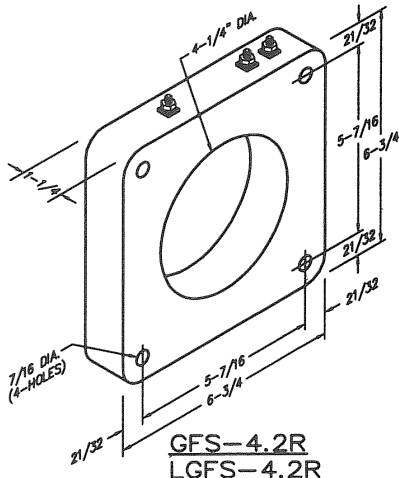
GFS-1.5R
LGFS-1.5R



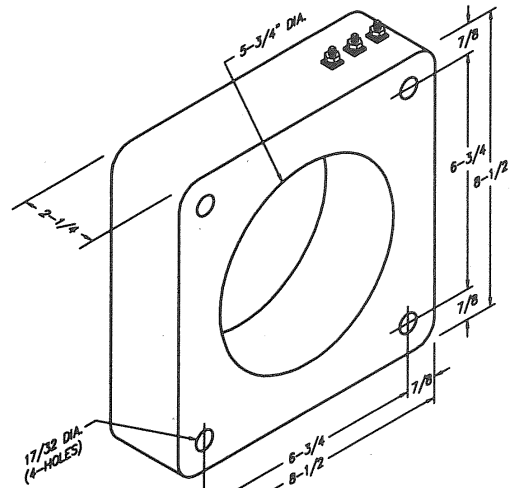
GFS-2.5R
LGFS-2.5R



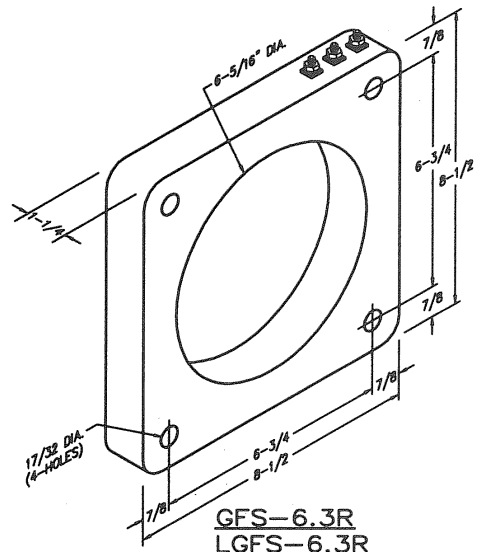
GFS-3.2R
LGFS-3.2R



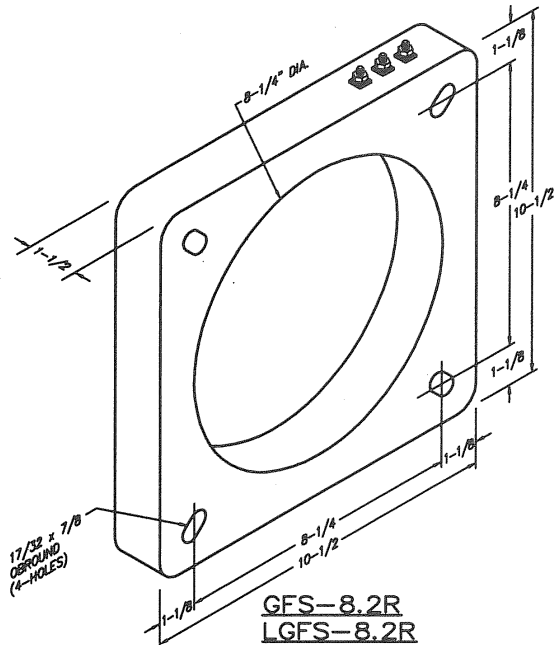
GFS-4.2R
LGFS-4.2R



GFS-5.7R
LGFS-5.7R



GFS-6.3R
LGFS-6.3R



GFS-8.2R
LGFS-8.2R

DIMENSIONS IN INCHES